

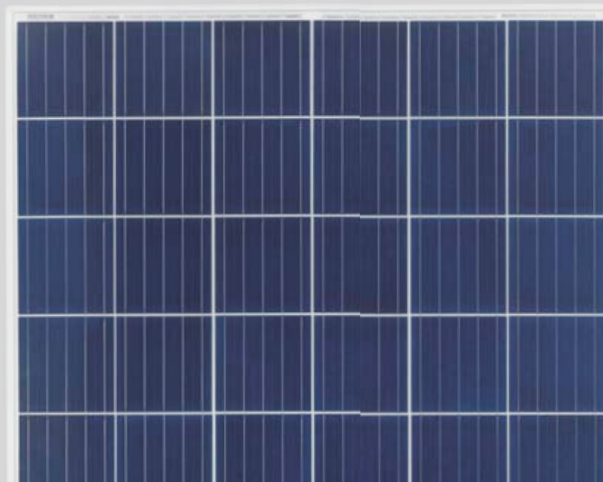
Yangtze Solar

72 Cells

330-380Watt

POLY CRYSTALLINE MODULE

ISO9001:2008, ISO14001:2004, OHSAS18001
certified factory.
IEC61215, IEC61730 certified products.



KEY FEATURES



Positive tolerance:

Positive tolerance of up to 5W delivers higher output reliability.



High Power Output:

Polycrystalline 72-cell module achieves a power output up to 380Wp.



PID RESISTANT:

Eagle modules pass PID test, limited power degradation by PID test is guaranteed for mass production.



Low-light Performance:

Advanced glass and surface texturing allow for excellent performance in low-light environments.



Severe Weather Resilience:

Certified to withstand: wind load (2400 Pascal) and snow load (5400 Pascal).



Durability against extreme environmental conditions:

High salt mist and ammonia resistance certified by TUV NORD.

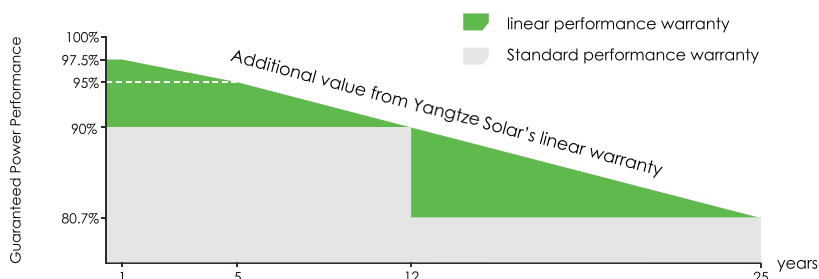


Temperature Coefficient:

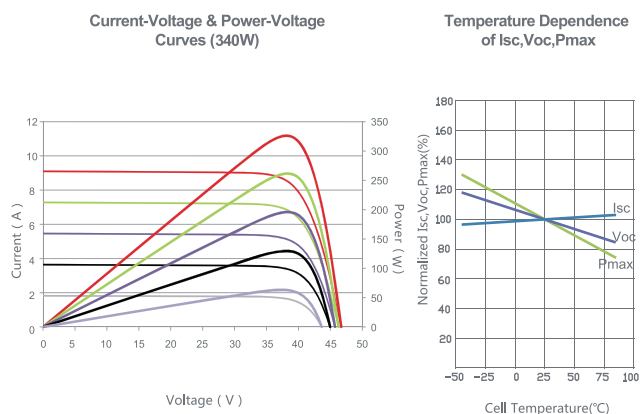
Improved temperature coefficient decreases power loss during high temperatures.

LINEAR PERFORMANCE WARRANTY

12 Year Product Warranty • 25 Year Linear Power Warranty



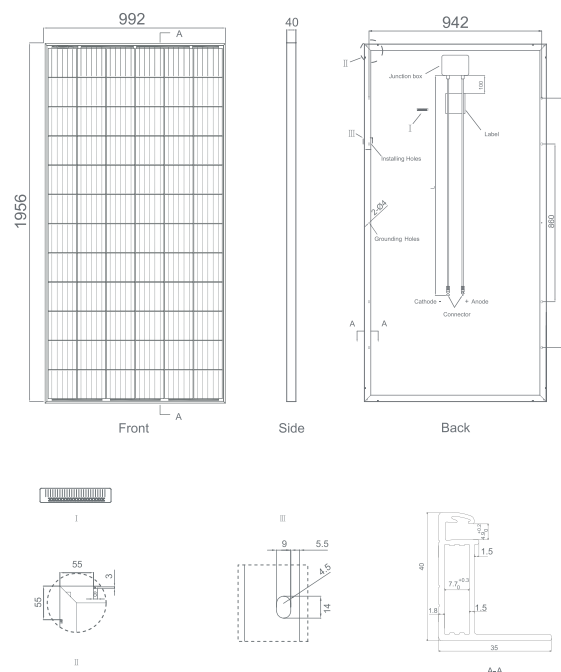
Electrical Performance & Temperature Dependence



Mechanical Characteristics

Cell Type	Poly-crystalline 156×156mm (6 inch)
No. of cells	72 (6×12)
Dimensions	1956×992×40mm (77.01×39.05×1.57 inch)
Weight	22.5 kg (49.6 lbs.)
Front Glass	3.2mm, Anti-Reflection Coating, High Transmission, Low Iron, Tempered Glass
Frame	Anodized Aluminium Alloy
Junction Box	IP67 Rated
Output Cables	TÜV 1×4.0mm ² , Length: 1200mm or Customized Length

Engineering Drawings



Packaging Configuration

(Two pallets=One stack)

26pcs/pallet, 52pcs/stack, 624 pcs/40'HQ Container

SPECIFICATIONS

Module Type	YS330P-72	YS335P-72	YS340P-72	YS345P-72	YS350P-72	YS360P-72	YS370P-72	YS380P-72
Maximum Power (Pmax)	330W	335W	340W	345W	350W	360W	370W	380W
Maximum Power Voltage (Vmp)	37.8V	38.0V	38.2V	38.4V	38.6V	39.0V	39.4V	40.0V
Maximum Power Current (Imp)	8.74A	8.82A	8.91A	8.99A	9.07A	9.23A	9.39A	9.50A
Open-circuit Voltage (Voc)	46.9V	47.2V	47.5V	47.8V	48.1V	48.6V	49.1V	49.8V
Short-circuit Current (Isc)	9.14A	9.18A	9.22A	9.26A	9.30A	9.46A	9.62A	9.73A
Module Efficiency STC (%)	17.01%	17.26%	17.52%	17.78%	18.04%	18.55%	19.07%	19.59%
Operating Temperature(°C)	-40°C~+85°C							
Maximum system voltage	1000VDC or 1500VDC							
Maximum series fuse rating	20A							
Power tolerance	0~+3%							
Temperature coefficients of Pmax	-0.40%/°C							
Temperature coefficients of Voc	-0.31%/°C							
Temperature coefficients of Isc	0.06%/°C							
Nominal operating cell temperature (NOCT)	45±2°C							

STC: Irradiance 1000W/m², Cell Temperature 25°C, AM=1.5

NOCT: Irradiance 800W/m², Ambient Temperature 20°C, AM=1.5, Wind Speed 1m/s

* Power measurement tolerance: ± 3%

The company reserves the final right for explanation on any of the information presented hereby. Yangze Solar.